



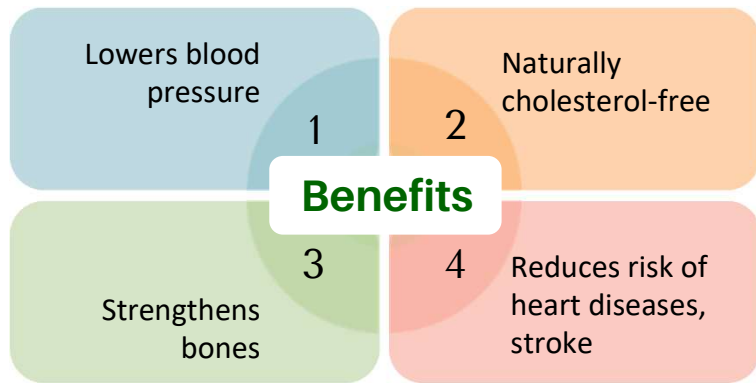
BRIDGING THE TRUST GAP

WITH TECHNOLOGY

The Journey and Scope of Soy

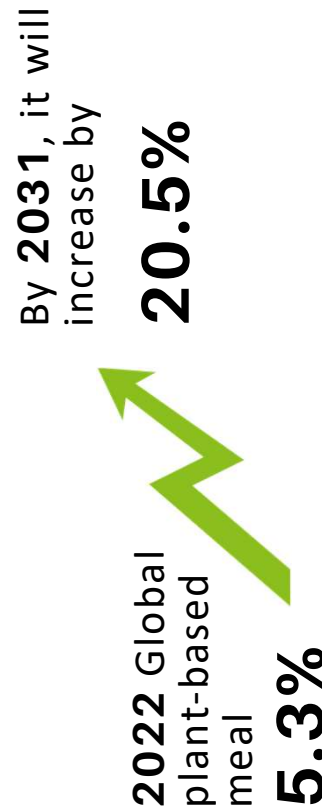


Increasing Global Significance of Soy



The plant-based market grew by 20% during the pandemic.

Worldwide **veganism** grew with increasing health and consumer awareness
10% of US adults are Vegan



A study published in an Italian article journal, **Environmental Public Health** in Jan 2023

Association exist between soyfood or soybean products consumption and psychological symptoms.

- 1 Secretion of brain hormones
- 2 Isoflavones in soy act as anti-depressants.
- 3 Animal experiment reverted potential mechanism of action of Isoflavones



Scope of Soy



Industrial Applications



Nutrition



Sustainability



Growth in income

Soy for Industrial Application

Soybeans have found diverse uses in various industrial applications due to their **versatility** and **eco-friendly** nature.

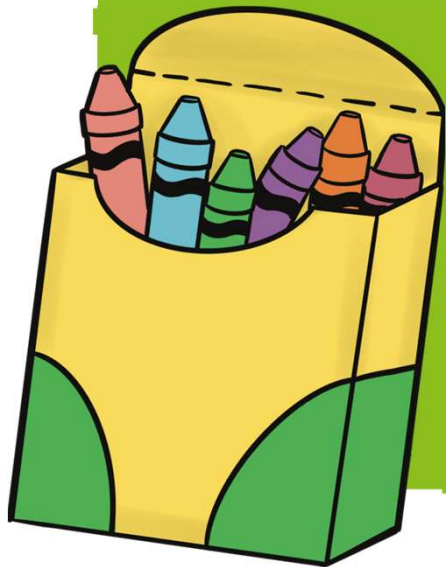


Biodiesel:
Soybean oil can be converted into biodiesel.

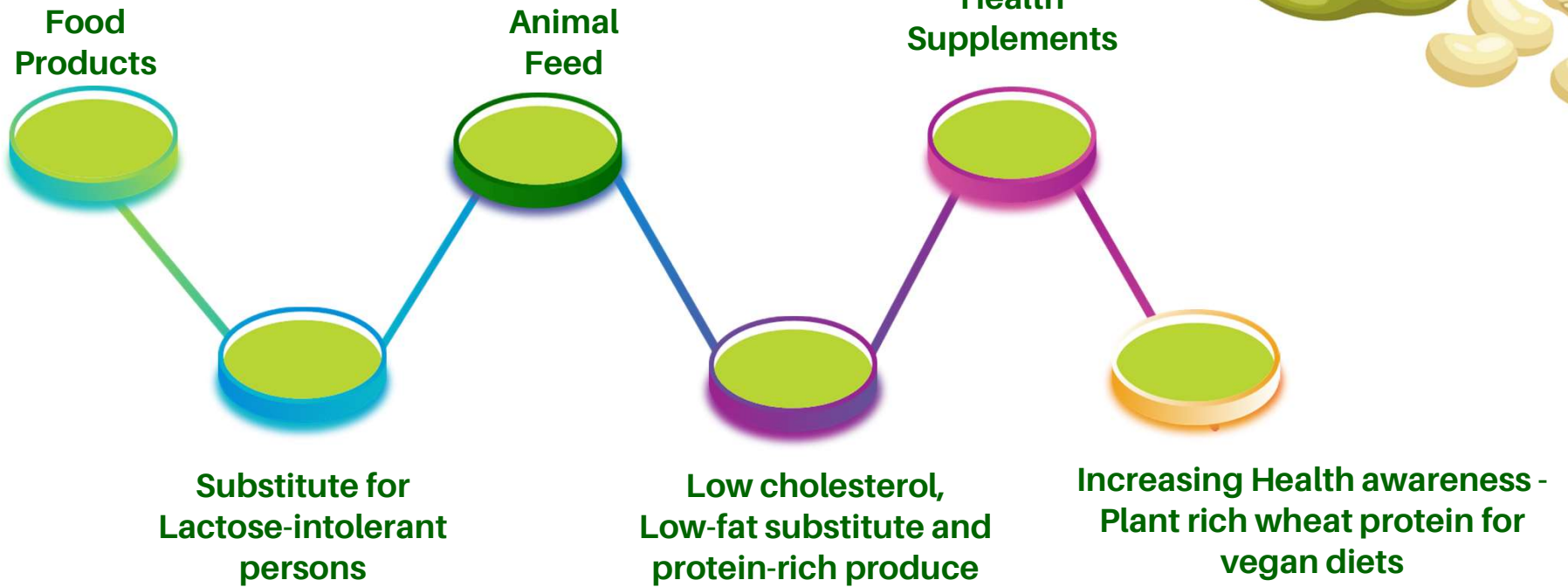


Solvents & Cleaners:
Some are made using soy-based ingredients.

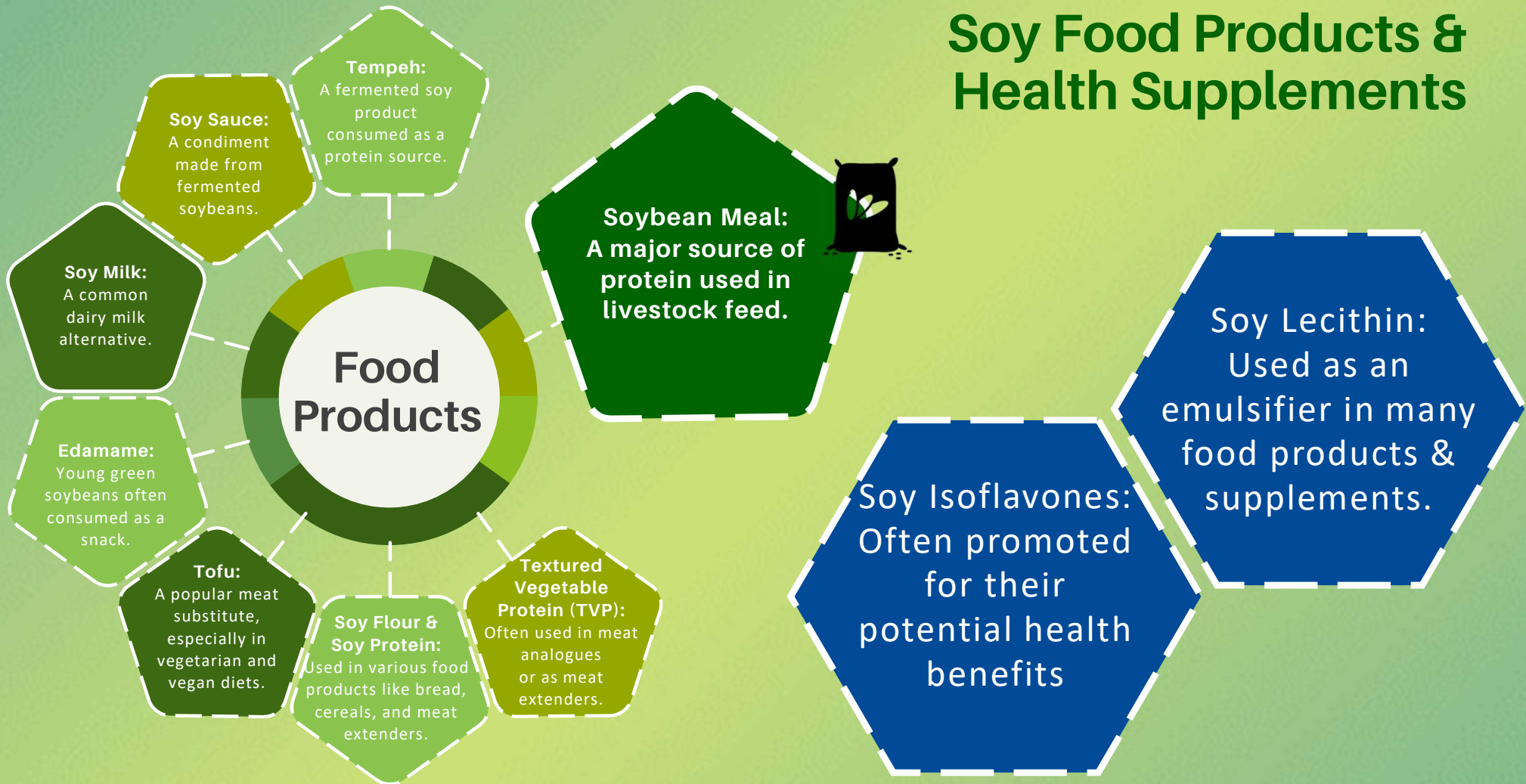
Inks, Crayons, and Candles:
Made from soybean oil.



Impact of Soy on Nutrition



Soy Food Products & Health Supplements



Soy's role in a sustainable future

1

Sustainable Agriculture:

Soybeans can be grown sustainably,

2

Crop Rotation:

Soybeans are nitrogen-fixing plants and are often used in crop rotation to improve soil health.

3

Genetic Modification:

Soybeans are one of the primary crops that have been genetically modified for various reasons, such as resistance to certain pests.

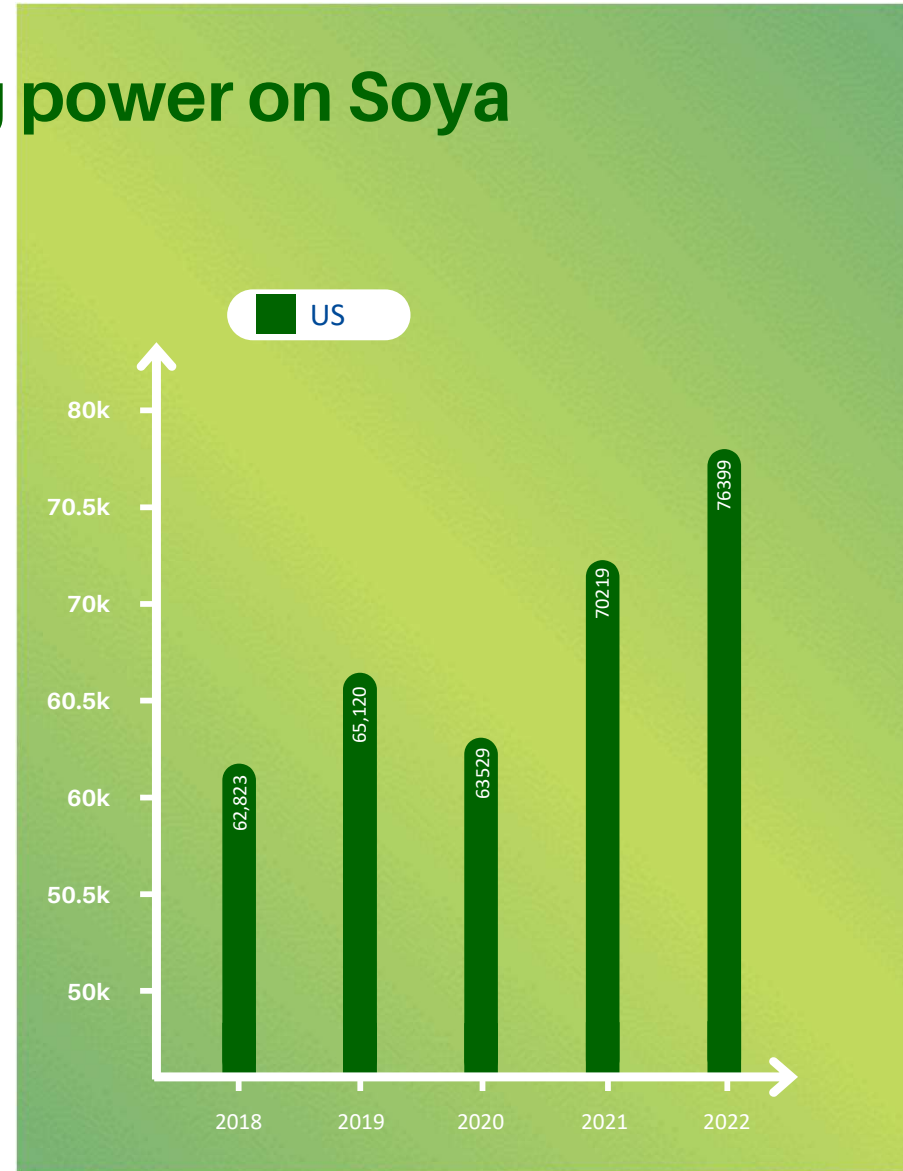
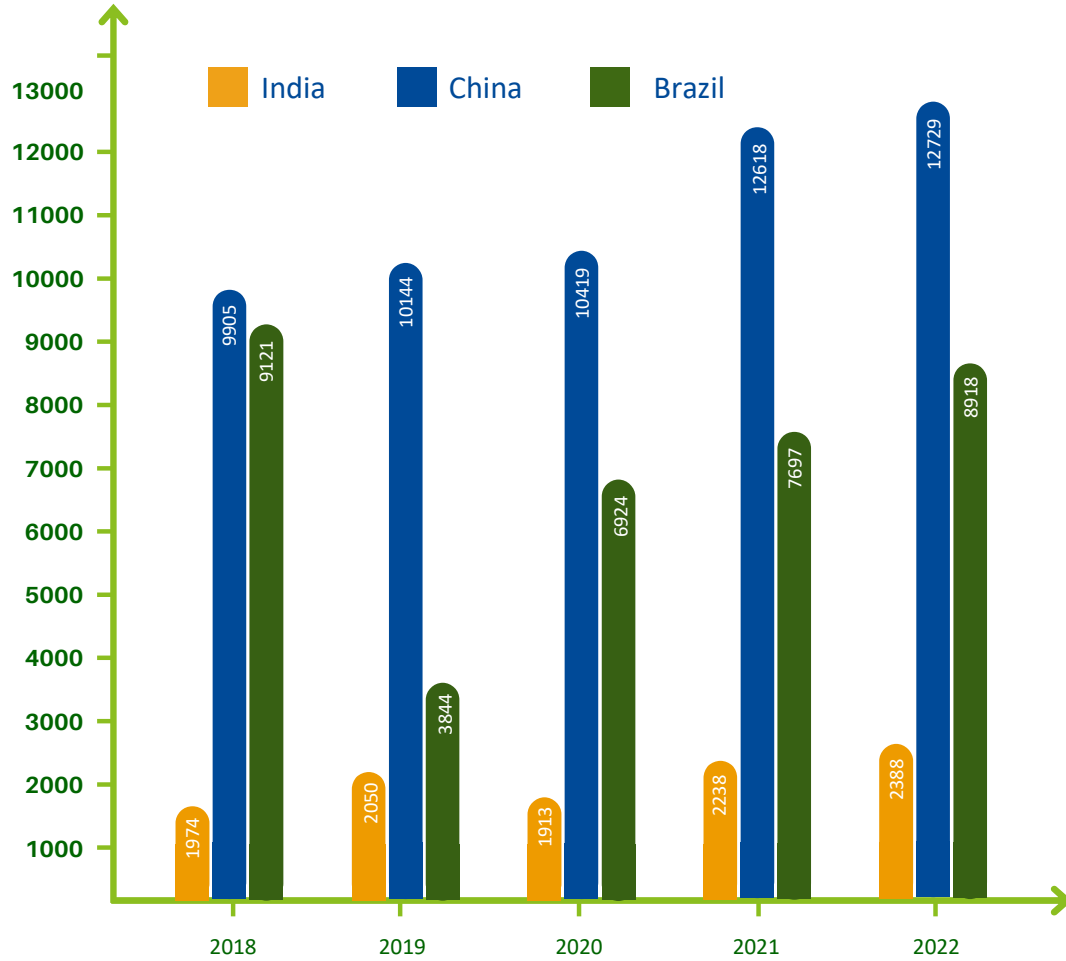
4

Genetic Modification:

Carbon Sequestration: Soybean plants can capture and store atmospheric carbon, playing a role in combatting climate change



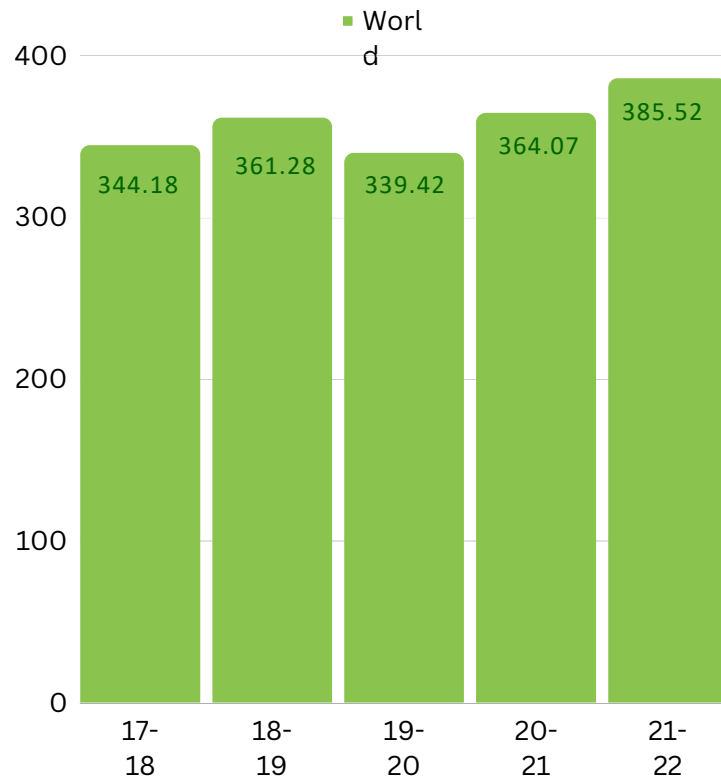
Impact of purchasing power on Soya



The growing market for Soy



Soy production



Year	India
17-18	8.35
18-19	10.93
19-20	9.30
20-21	10.45
21-22	11.20



Light Green to Dark Green : Soybean Farms.

Orange: Other pulses & crops, also there are high chances of intercropping in these fields.

Red: Trees / Fruit & Vegetables.

White: Trees

Soybean Acreage

STATE	DISTRICT	CROP	2021-22	2022-23	2023-24
Madhya Pradesh	SHAJAPUR	Soybean	284,807	253,479	272398
Madhya Pradesh	Agar Malwa	Soybean	166,167	144,565	SOPA
Madhya Pradesh	Ujjain	Soybean	509,257	483,794	SOPA
Maharashtra	Akola	Soybean	231,961	255,157	SOPA
Maharashtra	Nanded	Soybean	415,310	448,535	SOPA
Maharashtra	Parbhani	Soybean	276,896	296,279	SOPA

* All area unit is in hectare (ha)

* Arya has done tie up with sopa, the numbers will be presented by sopa shortly

Production

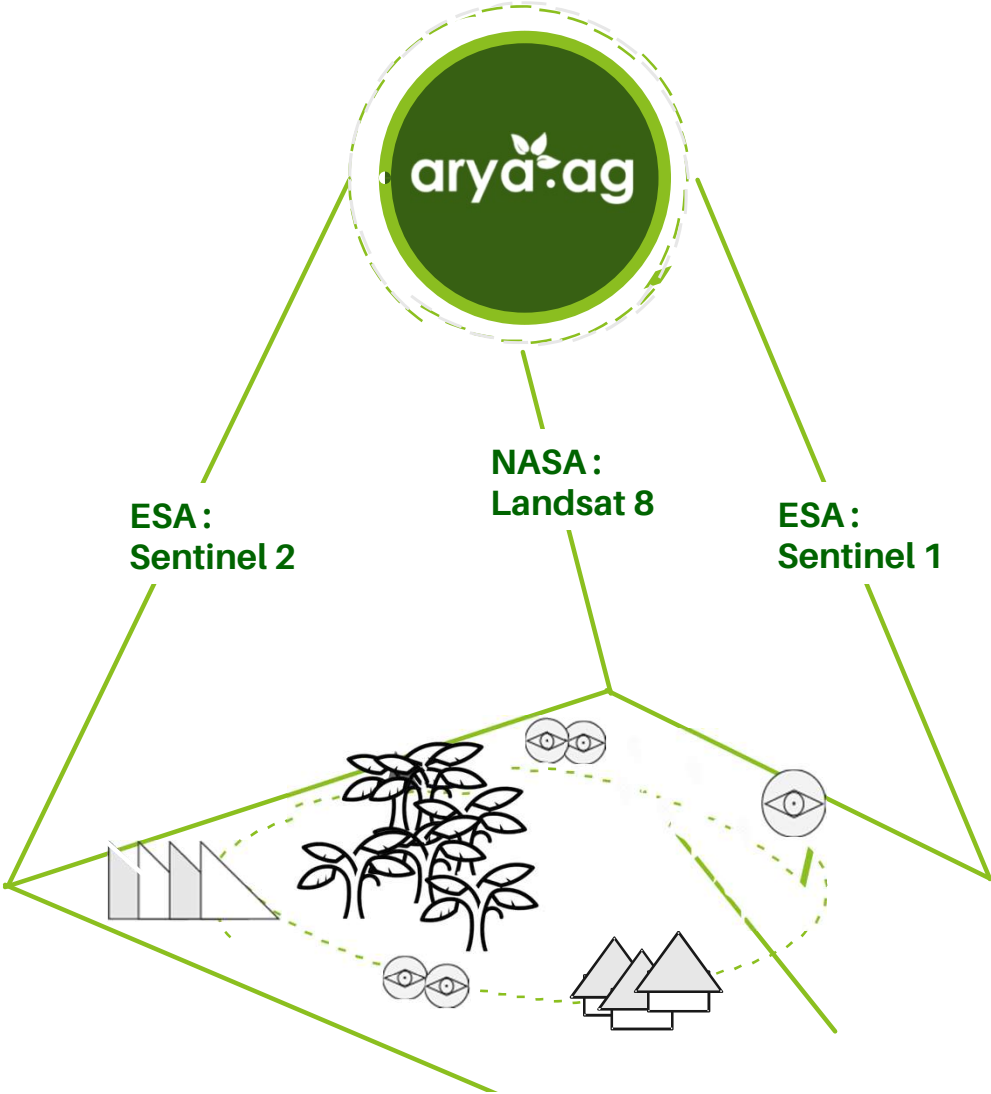
COUNTRY	INDIA
CROP	Soybean
YEAR	2022-23
GOVT	149.76
ARYA	143.01
CHANGE %	-4.5

Tonnes

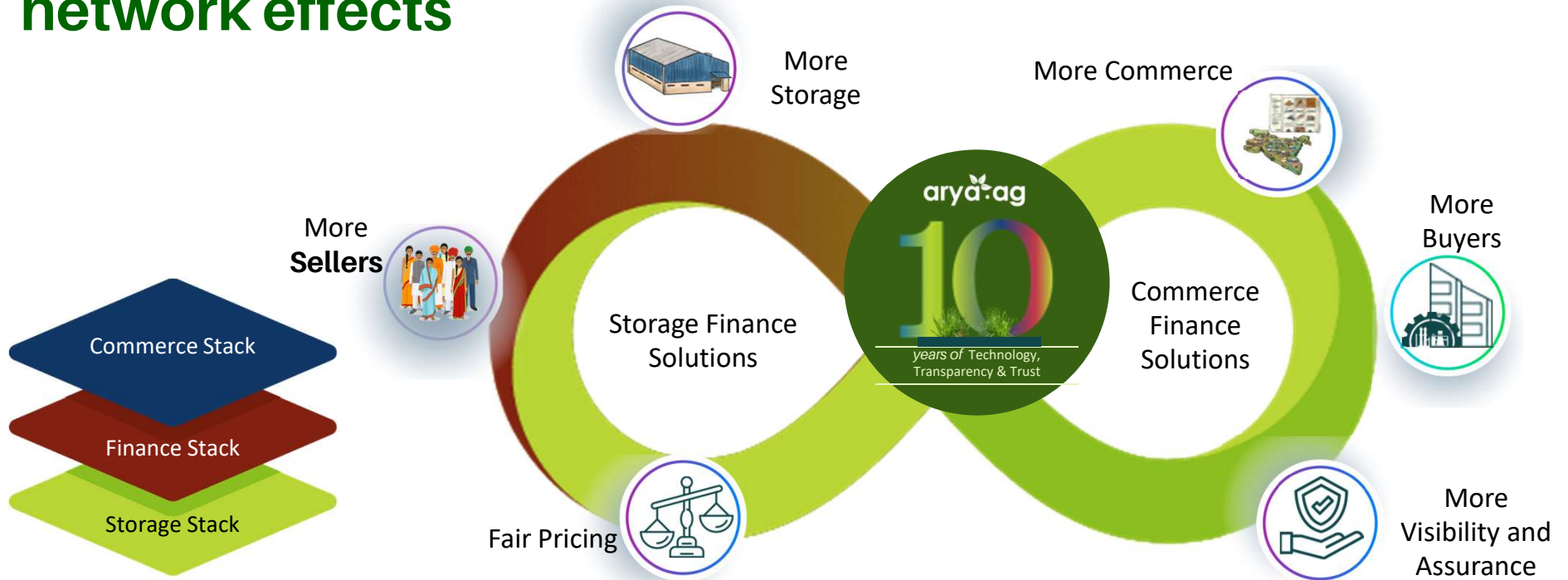
Our flagship offering, Satellite Data Intelligence

We leverage advanced AI and machine learning techniques to analyze satellite imagery for monitoring farms, crops & area of operations across the globe.

>90% AI Models Accuracy	07 Days Revisit	50+ Crop Portfolios
--------------------------------------	---------------------------	-------------------------------



An integrated platform enabling network effects



Farmer
₹50,000



Supply Aggregators
500

56% of Indian districts
21 states

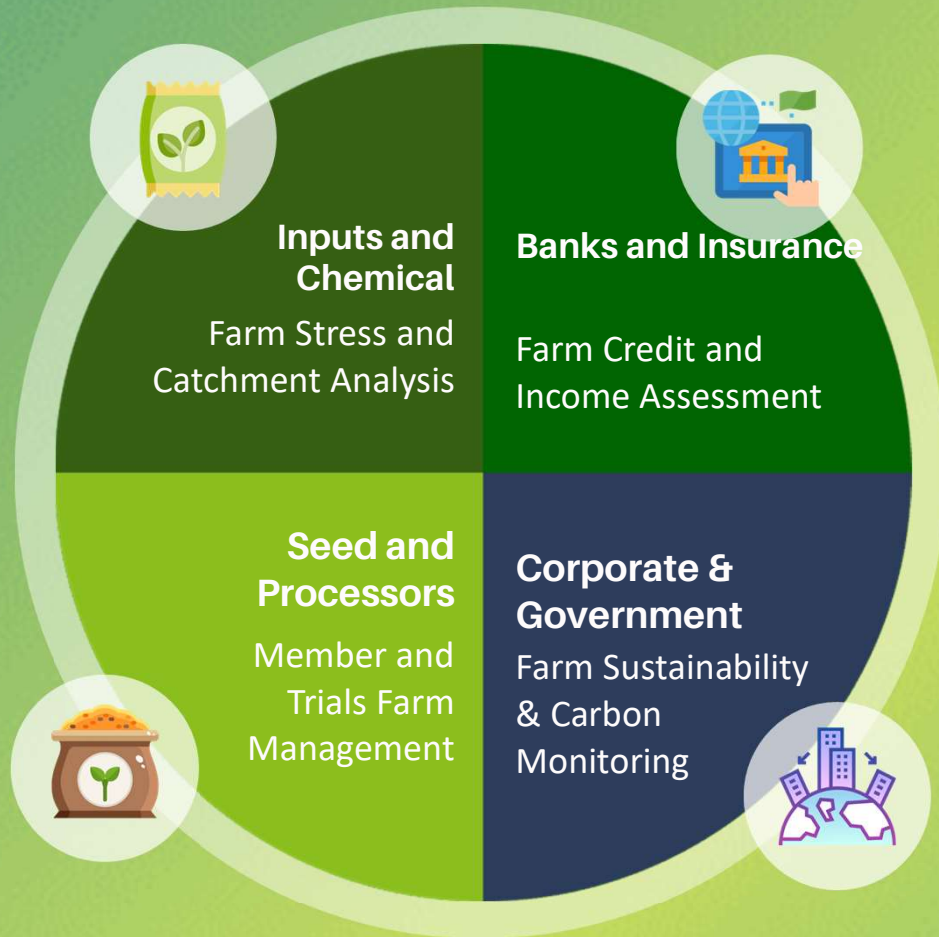


SME Processors
200



Corporates
10

Sectors we impact



Farm Boundaries

The Need for Mapping

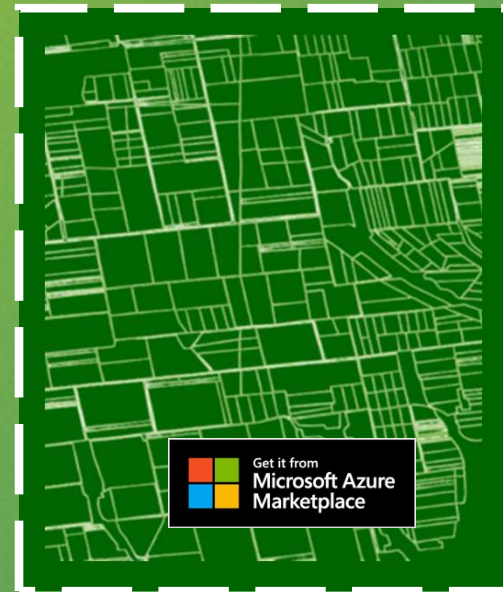
Essential for Effective Land Management and Crop Production

70x Fast and Accurate

Our AI Technology Provides Precise Farm Boundary and Reduces Physical Fieldwork

Best Quality

Trained on 1.1 Billion+ segments over 11 million training images. Accuracy > 97%.



Get it from
Microsoft Azure
Marketplace

Farm Insights



- **Boundaries**
Ease user onboarding on digital platforms
- **Activities**
Strategic Sowing & Harvest Timing for Growth & Risk Control
- **Soil Moisture %**
Improving Water Usage with Timely Irrigation Triggers

➤ **Score & Rankings**
Improve Farm Performance & Sustainability

➤ **Credit & Income**
Analysing Past Years Crop History and Management Practices

➤ **Stress**
Analyzing Stress Zones for Optimal Farm Management.

- DAMAGED
- STRESSED
- HEALTHY

Catchment Understanding



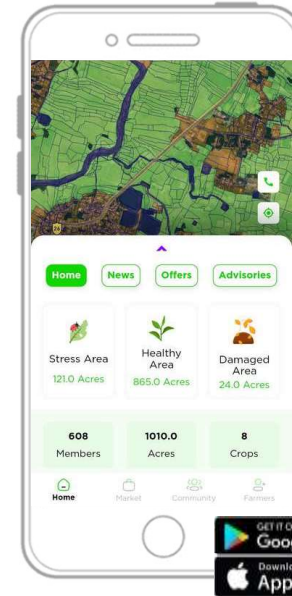
- **Crop Classification**
Identification & distribution of types of crops using AI
- **Stress Projection**
Algorithms for projection of losses, i.e, biotic, abiotic, nutrient, weather-based
- **Production Estimate**
Estimate to Improve Portfolio and Reduce Risks

➤ **Year-over-Year**
Comparison from Last Year for Decision Making

➤ **Resolution**
Leveraging Data for better Analysis

- STATE
- DISTRICT
- TALUKA
- VILLAGE

Mobile App



- **Home**
Access Reports, News, Expert Advice, Weather, Offers & Discounts.
- **Market**
Find Mandi Prices, Connect Buyers & Sellers, Avail Loans
- **Member:**
Monitor Farms, Connect with Members, Manage Crop, Plan Input Sales & Purchases

- **Community**
Solve issues via Video calls, Announcements, Broadcast Messaging
- **Digital Shop**
Create Own Shop to Share Product
- **Multi-Lingual**
Available in 6 languages.

Multiple Crops



Paddy



Wheat



Maize



Cotton



Sugarcane



Soyabean



Potato



Mango



Pomegranate



Orange



Grape



Onion



Chilli



Tomato



Hemp



Groundnut



Turmeric



Eucalyptus



Makhana



Banana

40+
CROPS



Flowers



Tobacco



Horticulture



arya.ag

Thanks!

Do you have any questions?

anand@arya.ag , navneet.ra@arya.ag

www.arya.ag

